

# tavolo PRANZO ALLUNGABILE / extendible table

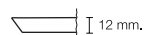
Design Centro Stile Scab



2418 VT 15

Tavolo allungabile da 160 a 210 cm con struttura in metallo verniciato. Telaio e gambe quadrate da 50x50 mm in acciaio zincato e verniciato a polveri effetto opaco. Movimento allungabile su sfere. Piano in stratificato HPL spessore 12 mm. Per uso interno/esterno.

*Extendible table from 160 to 210 cm, with structure in coated metal. Galvanised steel frame and squared legs measuring 50x50 mm with matt powder coating. Ball bearing extension runners. Top in 12 mm thick HPL laminated. For indoor/outdoor use.*



bordo inclinato con anima nera  
bevelled edge with black core

## FINITURA STRUTTURA BASE FINISHING



**VB**

verniciato  
bianco  
white coated



**VT**

verniciato  
tortora  
dove grey  
coated



**VA**

verniciato  
antracite  
anthracite grey  
coated

## FINITURA PIANO TOP FINISHING



**10**

bianco  
white



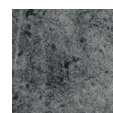
**15**

tortora  
dove grey



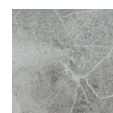
**81**

antracite  
anthracite grey



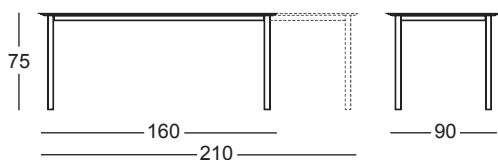
**87**

effetto  
cemento  
concrete effect

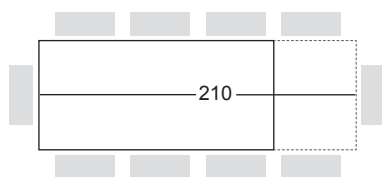


**90**

effetto  
pietra  
stone effect



Art. 2418



### BOX 1 - TELAIO / FRAME

Misure imballo Packing sizes	166x95x15 cm
Peso netto Net weight	Kg 24,6
Peso lordo Gross weight	Kg 29,6

### BOX 2 - PIANO / TOP

Misure imballo Packing sizes	174x91,5x6,5 cm
Peso netto Net weight	Kg 24,2
Peso lordo Gross weight	Kg 28

### BOX 3 - PROLUNGA / EXTENSION LEAF

Misure imballo Packing sizes	92x54x5,5 cm
Peso netto Net weight	Kg 7,6
Peso lordo Gross weight	Kg 8,8

made in Italy

**SCAB** DESIGN  
since 1957

Sede/Headquarters: 25030 Coccaglio (BS) Italy - Via G. Monauni, 12  
Divisione Commerciale Italia: Tel. 0307718.755 - italia@scab.it  
Export Department: Phone +390307718.715 - export@scabitaly.com  
[www.scabdesign.it](http://www.scabdesign.it)