

tavolo PRANZO ALLUNGABILE 120/160/200 / extendible table

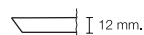
Design Centro Stile Scab



2419 VT 90

Tavolo allungabile da 120 a 200 cm con due prolunghe. Struttura in metallo verniciato. Telaio e gambe quadrate da 50x50 mm in acciaio zincato e verniciato a polveri effetto opaco. Movimento allungabile su sfere. Piano in stratificato HPL spessore 12 mm. Per uso interno/esterno.

Extendible table from 120 to 200 cm with two extensions. Structure in coated metal. Galvanised steel frame and squared legs measuring 50x50 mm with matt powder coating. Ball bearing extension runners. Top in 12 mm thick HPL laminated. For indoor/outdoor use.



bordo inclinato con anima nera
bevelled edge with black core

FINITURA STRUTTURA BASE FINISHING



VB

verniciato
bianco
white coated



VT

verniciato
tortora
dove grey
coated



VA

verniciato
antracite
anthracite grey
coated

FINITURA PIANO TOP FINISHING



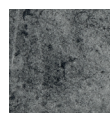
10

bianco
white



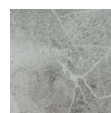
15

tortora
dove grey



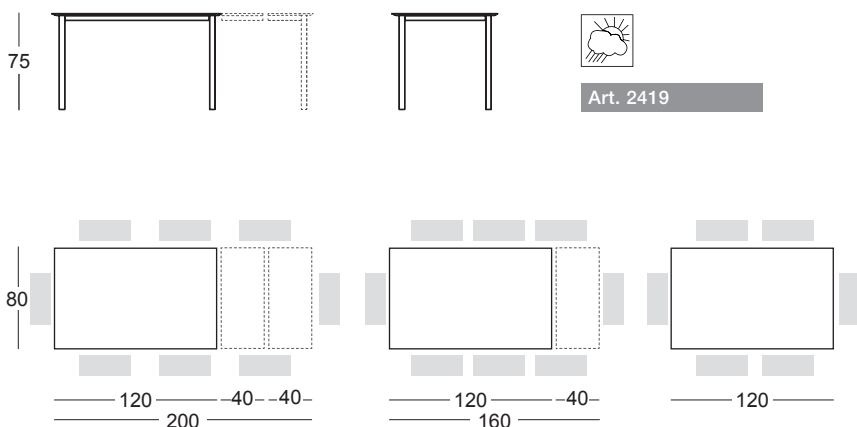
87

effetto
cemento
concrete effect



90

effetto
pietra
stone effect



Art. 2419

BOX 1 - TELAIO / FRAME

Misure imballo Packing sizes	160x90x11 cm
Peso netto Net weight	23,5 Kg
Peso lordo Gross weight	26,5 Kg

BOX 2 - PIANO / TOP

Misure imballo Packing sizes	128x82x5,5 cm
Peso netto Net weight	16,7 Kg
Peso lordo Gross weight	19 Kg

BOX 3 - PROLUNGHE / EXTENSION LEAVES

Misure imballo Packing sizes	89x50x6,5 cm
Peso netto Net weight	11 Kg
Peso lordo Gross weight	12 Kg



made in Italy

SCAB DESIGN
since 1957

Sede/Headquarters: 25030 Coccaglio (BS) Italy - Via G. Monauni, 12
Divisione Commerciale Italia: Tel. 0307718.755 - italia@scab.it
Export Department: Phone +390307718.715 - export@scabitaly.com
www.scabdesign.it